

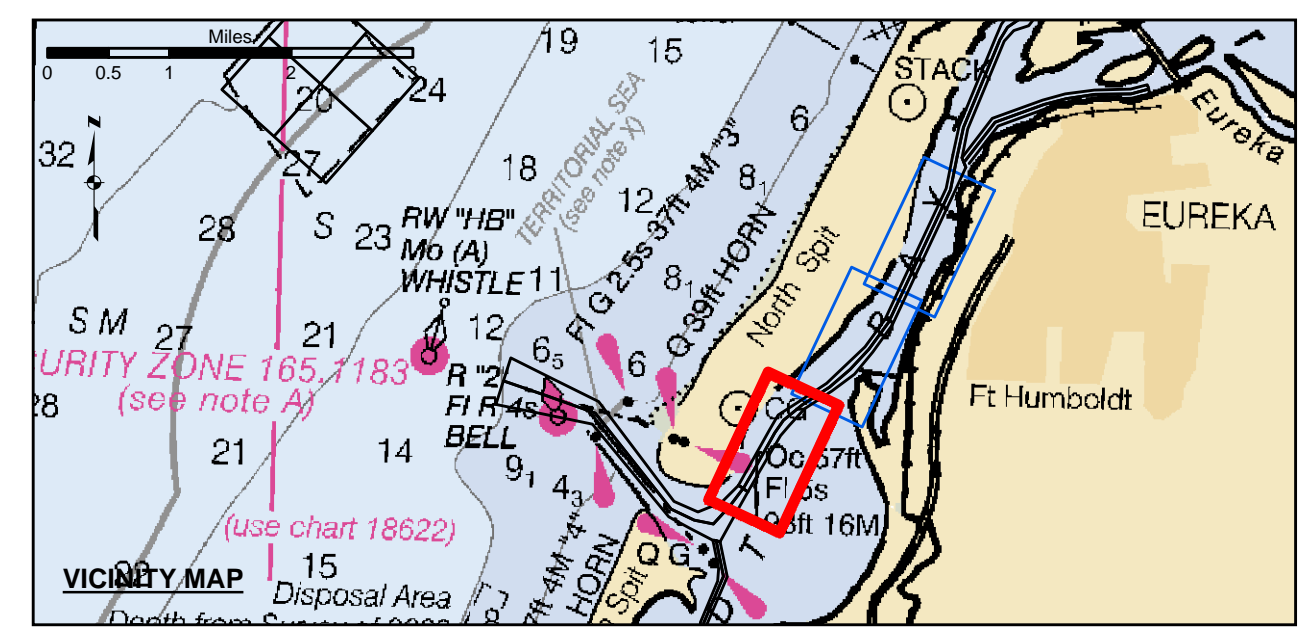
Angle Point	Easting	Northing
06	5945167.02	2166658.81
07	5945752.39	2166911.73
08	5946464.09	2167631.33
09	5946953.59	2168479.53
10	5947831.59	2170042.13
11	5948193.09	2170679.33
12	5949124.59	2171267.03
13	5950306.09	2172059.13
14	5951141.79	2172853.23
15	5951976.39	2173648.23
16	5952816.79	2174408.43
17	5953484.79	2175204.43
28	5956165.60	2181942.62
29	5956348.68	2181424.64
30	5955866.99	2180393.43
31	5953163.09	2174604.63
32	5952300.39	2173413.53
33	5951516.79	2172459.53
34	5950526.69	2171724.13
35	5949343.09	2170952.03
36	5948674.79	2170232.13
37	5948301.49	2169794.33
38	5947388.59	2168234.23
39	5946907.49	2167381.23
40	5946431.39	2166537.23
C07	5946085.69	2166728.23
C08	5946686.99	2167508.93
C09	5947166.09	2168359.43
C10	5948049.99	2169917.43
C11	5949333.69	2170455.43
C12	5949233.79	2171119.43
C13	5950417.39	2171891.43
C14	5951329.29	2172858.43
C15	5952138.39	2173530.43
C16	5952989.89	2174706.43
C17	5955671.89	2180451.43

US Army Corps of Engineers
 San Francisco District
 450 Golden Gate Ave
 San Francisco, CA 94102

DISCLAIMER
 The United States Government furnishes this information as a public service. It is not intended to be used for any purpose other than that intended by the Government. The user is responsible for the results of any use of this information. The user is not to be held liable for any damage or injury resulting from the use of this information. The user is not to be held liable for any damage or injury resulting from the use of this information. The user is not to be held liable for any damage or injury resulting from the use of this information.

Prepared Under the Direction of	Chart Date
LT COLONEL C.E. DISTRICT ENGINEER	Feb 15, 2019
Submitted	Plotted By
Hydro Survey Team Leader	PDT
Recommended	Checked By
Chief, Hydro Survey Section	PDT
Approved	Chief, Construction Branch

HUMBOLDT COUNTY
**HUMBOLDT BAY
 NORTH BAY CHANNEL
 CONDITION SURVEY
 06-11 FEBRUARY 2019**

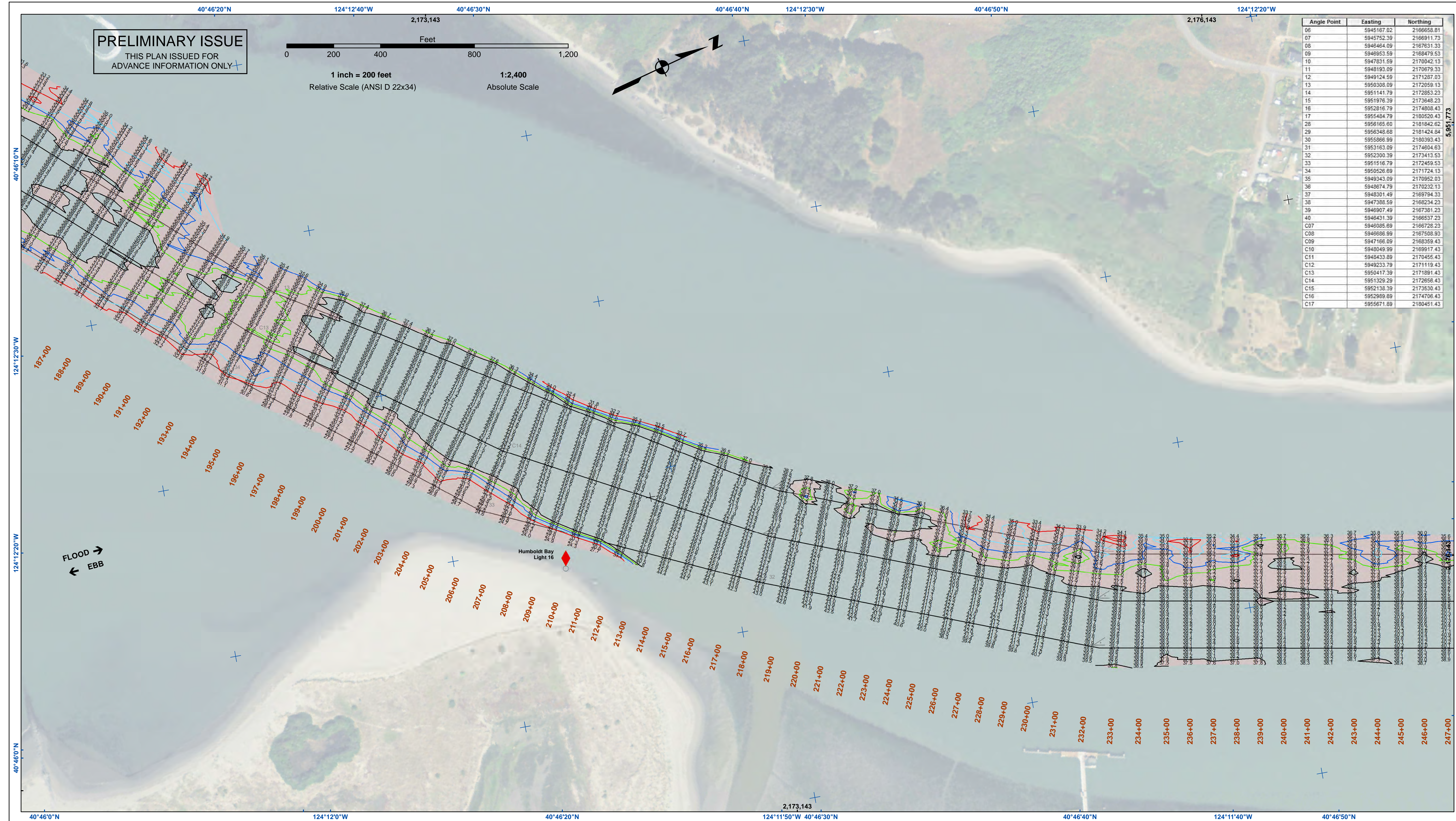


- Federal Navigation Channel
- Shoaling Area
- Placement Area
- Anchorage Area
- Wreck Area
- Submerged Wreck
- Angle Point
- Beacon, General
- Obstruction Point
- Navigation Buoy
- Navigation Buoy
- Shoalest Sounding*
- Contours**
- 38
- 37
- 36
- 35
- 34

NOTES:
 DRAWINGS NOT TO BE USED AS NAVIGATION. ONLY CHANNEL CONDITION AT DATE OF SURVEY. THE LOCATION OF ALL NAVIGATION AIDS ARE BASED ON INFORMATION PROVIDED BY THE U.S. COAST GUARD. BUOY LOCATION REPRESENT THE POSITION OF THE SINKER ONLY.
 SURVEYED BY THE CORPS OF ENGINEERS.
 SOUNDINGS WERE TAKEN BY FATHOMETER AND ARE SHOWN TO THE NEAREST TENTHS OF A FOOT.
 SOUNDINGS ARE BASED ON THE DATUM OF MEAN LOWER LOW WATER AT THE LOCALITY.
 PLANE GRID AND COORDINATES ARE BASED ON THE STATE OF CALIFORNIA COORDINATE SYSTEM, LAMBERT CONFORMAL PROJECTION, ZONE 1 NAD 83, CALIFORNIA, AS DESCRIBED IN SPECIAL PUBLICATION NO. 235, PUBLISHED BY THE NATIONAL OCEAN SURVEY.

PROJECT DEPTHS ARE AS FOLLOWS:
 BAR & ENTRANCE CHANNEL = 48 FEET
 NORTH BAY, SAMOIA TO MILE 5.0 & = 38 FEET
 EUREKA CHANNEL, FIELDS LANDING CHANNEL & MILE 5.0 TO "N" STREET = 26 FEET
 SOUNDINGS ARE BASED ON TIDE GAUGES REFERENCED TO U.S.C. & G.S. BENCH MARKS AS FOLLOWS:
 EUREKA & SOMOIA CHANNELS - B.M. NO. 4 (1906) ELEV. 33.81' M.L.L.W.
 ENTRANCE & NORTH BAY CHANNELS - B.M. NO. 9 (1937) ELEV. 16.35' M.L.L.W.
 FIELDS LANDING CHANNEL - B.M. NO. 5 (1925) ELEV. 8.52' M.L.L.W.

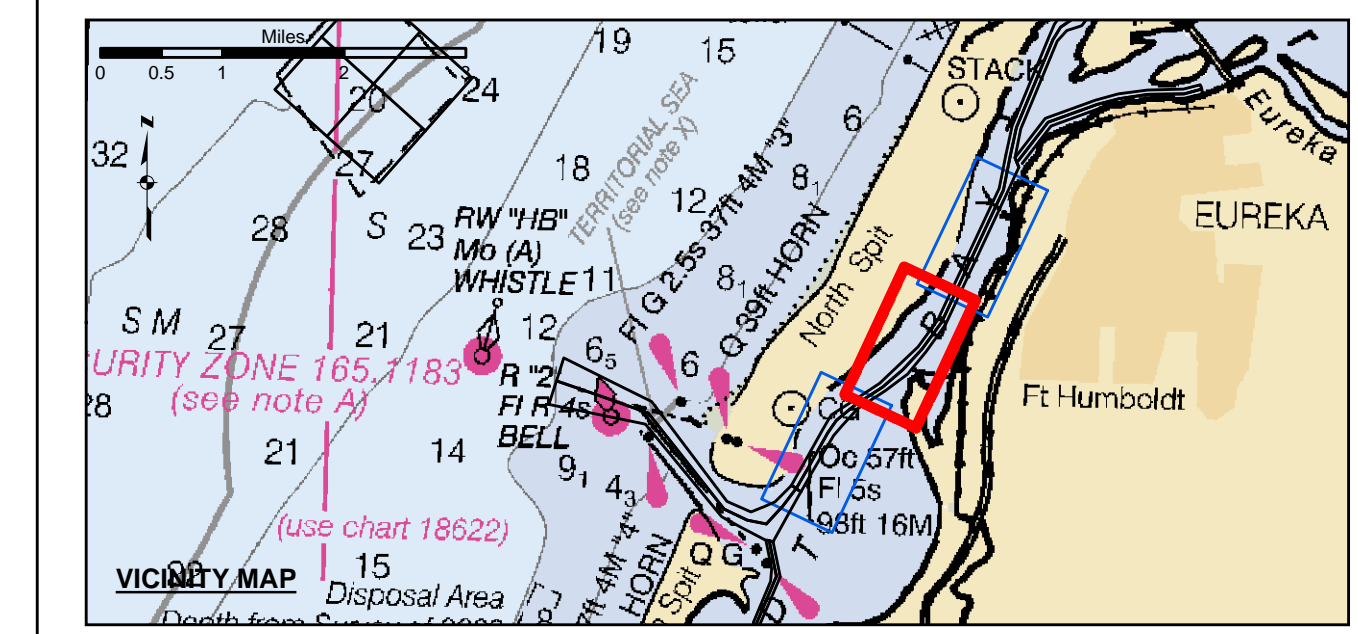
Sheet Reference Number 1 of 3



Angle Point	Easting	Northing
06	5945167.02	2166658.81
07	5945752.39	2166911.73
08	5946464.09	2167631.33
09	5946953.59	2168479.53
10	5947831.59	2170042.13
11	5948193.09	2170679.33
12	5949124.59	2171267.03
13	5950306.09	2172059.13
14	5951141.79	2172853.23
15	5951976.39	2173648.23
16	5952816.79	2174408.43
17	5953484.79	2175204.43
18	5954165.60	2176042.62
19	5954868.68	2176924.84
20	5955586.99	2177852.43
21	59563163.09	2178826.63
22	5957000.39	2179847.53
23	5957749.79	2180915.53
24	5958562.69	2182031.23
25	5959443.09	2183195.03
26	5960384.79	2184407.13
27	5961388.59	2185667.23
28	5962456.69	2186985.23
29	5963590.69	2188361.23
30	5964791.49	2189795.33
31	5966060.49	2191287.53
32	5967398.59	2192837.83
33	5968807.49	2194446.23
34	5970287.49	2196113.73
35	5971839.09	2197840.53
36	5973463.09	2199627.73
37	5975160.49	2201475.53
38	5976932.49	2203384.03
39	5978779.09	2205353.23
40	5980701.49	2207383.23
C07	5982700.49	2209473.23
C08	5984776.09	2211623.53
C09	5986928.09	2213835.03
C10	5989156.79	2216107.53
C11	5991462.39	2218441.03
C12	5993845.79	2220835.53
C13	5996307.79	2223290.03
C14	5998849.09	2225804.53
C15	6001470.49	2228379.03
C16	6004182.49	2231013.53
C17	6006985.49	2233708.03

US Army Corps of Engineers
 San Francisco District
 450 Golden Gate Ave
 San Francisco, CA 94102

DISCLAIMER
 The United States Government furnishes this data for informational purposes only. The data represents the results of data collected by the United States Government. The data is not intended for navigation. The user is responsible for the accuracy of the data for other than the intended purpose. The user is responsible for the accuracy of the data for other than the intended purpose. The user is responsible for the accuracy of the data for other than the intended purpose. The user is responsible for the accuracy of the data for other than the intended purpose.



Federal Navigation Channel	Beacon, General	Contours
Shoaling Area	Obstruction Point	
Placement Area	Navigation Buoy	-38
Anchorage Area	Navigation Buoy	-37
Wreck Area	Shoalest Sounding*	-36
Submerged Wreck		-35
Angle Point		-34

NOTES:
 DRAWINGS NOT TO BE USED AS NAVIGATION. ONLY CHANNEL CONDITION AT DATE OF SURVEY. THE LOCATION OF ALL NAVIGATION AIDS ARE BASED ON INFORMATION PROVIDED BY THE U.S. COAST GUARD. BUOY LOCATION REPRESENT THE POSITION OF THE SINKER ONLY.

SURVEYED BY THE CORPS OF ENGINEERS.

SOUNDINGS WERE TAKEN BY FATHOMETER AND ARE SHOWN TO THE NEAREST TENTHS OF A FOOT.

SOUNDINGS ARE BASED ON THE DATUM OF MEAN LOWER LOW WATER AT THE LOCALITY.

PLANE GRID AND COORDINATES ARE BASED ON THE STATE OF CALIFORNIA COORDINATE SYSTEM, LAMBERT CONFORMAL PROJECTION, ZONE 1 NAD 83, CALIFORNIA, AS DESCRIBED IN SPECIAL PUBLICATION NO. 235, PUBLISHED BY THE NATIONAL OCEAN SURVEY.

PROJECT DEPTHS ARE AS FOLLOWS:
 BAR & ENTRANCE CHANNEL = 48 FEET
 NORTH BAY, SAMOA TO MILE 5.0 & = 38 FEET
 EUREKA CHANNEL, FIELDS LANDING CHANNEL & MILE 5.0 TO "N" STREET = 26 FEET

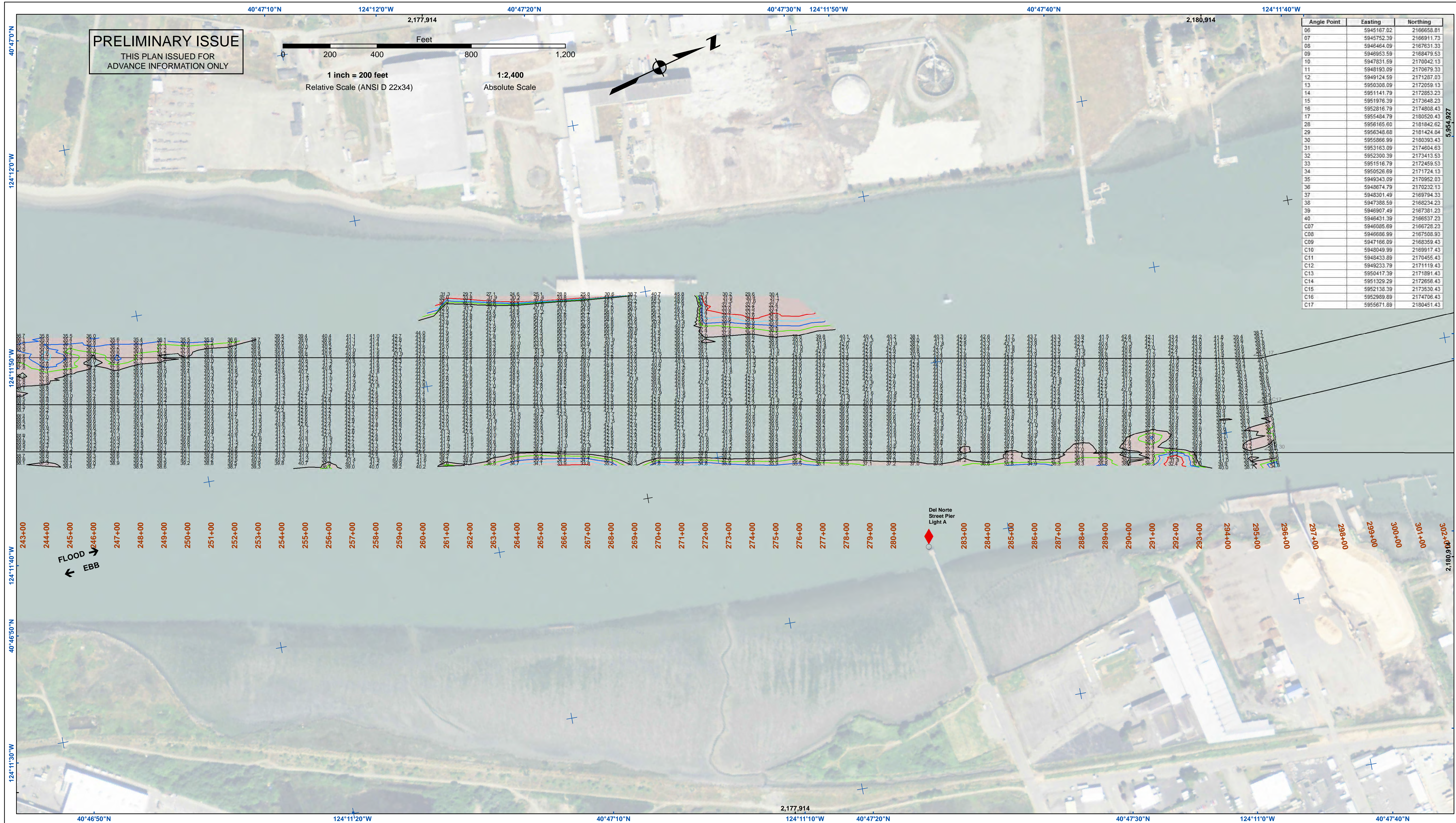
1:00 INDICATES THE NUMBER AND BEGINNING OF A LINE OF SOUNDINGS.

SOUNDINGS ARE BASED ON TIDE GAUGES REFERENCED TO U.S.C. & G.S. BENCH MARKS AS FOLLOWS:
 EUREKA & SOMOA CHANNELS - B.M. NO. 4 (1906) ELEV. 33.81' M.L.L.W.
 ENTRANCE & NORTH BAY CHANNELS - B.M. NO. 9 (1937) ELEV. 16.35' M.L.L.W.
 FIELDS LANDING CHANNEL - B.M. NO. 5 (1925) ELEV. 8.52' M.L.L.W.

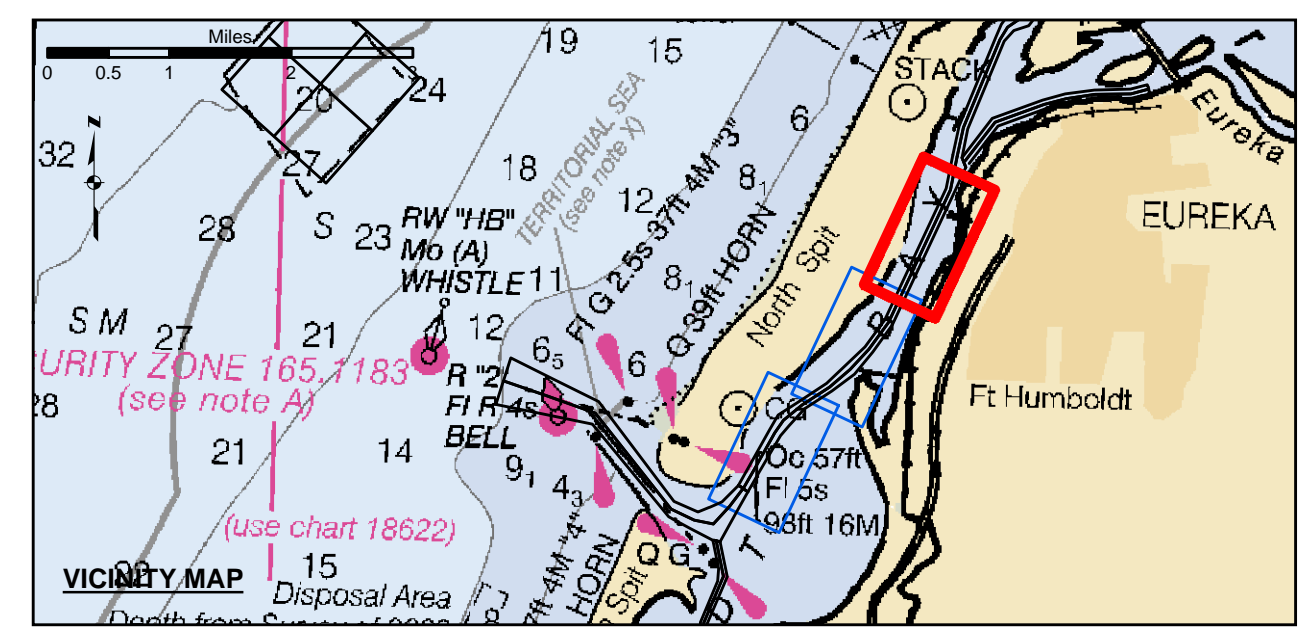
Chart Date:	Feb 15, 2019
Surveyed By:	TRAVIS J. RAYFIELD
Plotted By:	PDT
Designed By:	PDT
Drawn By:	PDT

HUMBOLDT COUNTY
 HUMBOLDT BAY
 NORTH BAY CHANNEL
 CONDITION SURVEY
 06-11 FEBRUARY 2019

Sheet Reference Number
 2 of 3



Angle Point	Easting	Northing
06	5945167.02	2166658.81
07	5945752.39	2166911.73
08	5946464.09	2167631.33
09	5946953.59	2168479.53
10	5947831.59	2170042.13
11	5948193.09	2170679.33
12	5949124.59	2171267.03
13	5950306.09	2172059.13
14	5951141.79	2172853.23
15	5951976.39	2173648.23
16	5952816.79	2174408.43
17	5953484.79	2175020.43
28	595165.60	2181842.62
29	5956348.68	2181424.64
30	5955866.99	2180393.43
31	5953163.09	2174604.63
32	5952300.39	2173413.53
33	5951516.79	2172459.53
34	5950526.69	2171724.13
35	5949343.09	2170952.03
36	5948674.79	2170232.13
37	5948301.49	2169794.33
38	5947388.59	2168234.23
39	5946907.49	2167381.23
40	5946431.39	2166537.23
C07	5946085.69	2166728.23
C08	5946686.99	2167508.93
C09	5947166.09	2168359.43
C10	5948049.99	2169917.43
C11	5948433.69	2170455.43
C12	5949233.79	2171119.43
C13	5950417.39	2171881.43
C14	5951329.29	2172858.43
C15	5952138.39	2173530.43
C16	5952989.89	2174706.43
C17	5955671.69	2180451.43



Federal Navigation Channel	Beacon, General	Contours
Shoaling Area	Obstruction Point	-38
Placement Area	Navigation Buoy	-37
Anchorage Area	Navigation Buoy	-36
Wreck Area	Shoalest Sounding*	-35
Submerged Wreck		-34
Angle Point		

NOTES:
DRAWINGS NOT TO BE USED AS NAVIGATION. ONLY CHANNEL CONDITION AT DATE OF SURVEY. THE LOCATION OF ALL NAVIGATION AIDS ARE BASED ON INFORMATION PROVIDED BY THE U.S. COAST GUARD. BUOY LOCATION REPRESENT THE POSITION OF THE SINKER ONLY.

SURVEYED BY THE CORPS OF ENGINEERS.

SOUNDINGS WERE TAKEN BY FATHOMETER AND ARE SHOWN TO THE NEAREST TENTHS OF A FOOT.

SOUNDINGS ARE BASED ON THE DATUM OF MEAN LOWER LOW WATER AT THE LOCALITY.

PLANE GRID AND COORDINATES ARE BASED ON THE STATE OF CALIFORNIA COORDINATE SYSTEM, LAMBERT CONFORMAL PROJECTION, ZONE 1 NAD 83, CALIFORNIA, AS DESCRIBED IN SPECIAL PUBLICATION NO. 235, PUBLISHED BY THE NATIONAL OCEAN SURVEY.

PROJECT DEPTHS ARE AS FOLLOWS:
BAR & ENTRANCE CHANNEL = 48 FEET
NORTH BAY, SAMOA TO MILE 5.0 & = 38 FEET
EUREKA CHANNEL, FIELDS LANDING CHANNEL & MILE 5.0 TO "N" STREET = 26 FEET

1:00 INDICATES THE NUMBER AND BEGINNING OF A LINE OF SOUNDINGS.

SOUNDINGS ARE BASED ON TIDE GAUGES REFERENCED TO U.S.C. & G.S. BENCH MARKS AS FOLLOWS:
EUREKA & SOMOA CHANNELS - B.M. NO. 4 (1906) ELEV. 33.81' M.L.L.W.
ENTRANCE & NORTH BAY CHANNELS - B.M. NO. 9 (1937) ELEV. 16.35' M.L.L.W.
FIELDS LANDING CHANNEL - B.M. NO. 5 (1925) ELEV. 8.52' M.L.L.W.

US Army Corps of Engineers
San Francisco District
450 Golden Gate Ave
San Francisco, CA 94102

DISCLAIMER
The United States Government furnishes this data for informational purposes only. The data represents the results of data collected by the United States Government. The data is not intended for navigation. The user is responsible for the accuracy of the data for other than the intended purpose. The user is responsible for the results of any application of the data for other than the intended purpose. These data belong to the Government. Therefore the user may not transfer these data to others without also transferring this disclaimer.

Chart Date:	Feb 15, 2019
Designed by:	PDT
Plotted by:	PDT
Checked by:	PDT
Drawn by:	PDT

HUMBOLDT COUNTY
CALIFORNIA
HUMBOLDT BAY
NORTH BAY CHANNEL
CONDITION SURVEY
06-11 FEBRUARY 2019

Sheet
Number
3 of 3